

 imetrum



# Vector

## Extensometer

**Instrumentation  
Devices** 

Instrumentation Devices Srl  
Via Acquanera 29 - 22100 COMO (Italy)  
ph +39 031 525 391- fax +39 031 507 984  
info@instrumentation.it - www.instrumentation.it

# Vector Extensometer

Vector is a new concept in strain and extension measurement.

It is a self-contained extensometer, capable of replacing multiple sensors with a single, industry specific instrument.

Using adaptive AI to implement decades of knowledge, paired with state-of-the-art hardware, Vector reduces throughput times whilst improving measurement accuracy and consistency.



## Accurate

Meets or exceeds ISO 9513 Class 0.5 and ASTM E83 Class B-1



## Affordable

Reduce testing costs and drive faster ROI with the U200, available at a comparable price to a Clip-On



## Intuitive

Vector is up and running with four easy steps: Install; Mark; Align; and Measure



## Versatile

Vector can be configured to work with different mark types, gauge lengths, and outputs

# Exceptional design

Vector reduces the challenges of traditional extensometers by using non-contact, high accuracy three-dimensional measurement techniques:

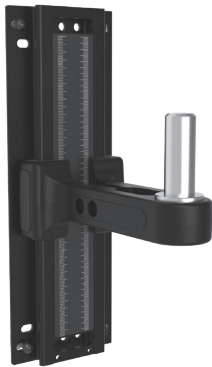
- Increases testing efficiency by reducing handling operations;
- Measures strain through failure;
- Operates in harsh environments and temperature chambers with no loss of functionality;
- Tests highly fragile specimens without impacting them;
- Enables rapid specimen throughput as well as easy integration to automation systems.

# Simple, reliable operation

- Intuitive features such as laser alignment guides, status indicator lights and a flexible operating distance all help the operator during setup and use.
  - Easy to understand feedback from both the Vector software interface and Vector itself, provides immediate confirmation of the state of the Module.
  - A range of automation features such as specimen and gauge length detection, simplify the operator interaction and improve test reliability.
  - Vector is pre-configured with a large working volume so extensometer setup changes are reduced when alternating between different specimens, grips or test types.
  - Onboard adaptive processing enables truly zero touch operation with dynamic response to varying specimen size, appearance and behaviour.
  - Automatic and seamless access to the built-in validation mode provides immediate confidence that Vector is behaving as expected and providing accurate results.
-

# Accessories

A Marking Kit is included with stamps, stencils and inks for a range of different specimens.



## UTM Interface

Suitable for mounting to UTM T-slots.



## Extension Arm

Suitable for larger test frames or use with temperature chambers.



## Split Collar Clamps

For mounting Vector to UTMs fitted with cylindrical columns.



## Base Plate Adapters

To allow Vector to be fitted to UTMs without T-slots or cylindrical columns.

Imetrum Limited  
The Courtyard, Wraxall Hill,  
Wraxall, Bristol UK,  
BS48 1NA  
+44 (0) 1275 464 443  
hello@imetrum.com



Follow us for news & updates:



PB1115



Instrumentation Devices Srl  
Via Acquanera 29 - 22100 COMO (Italy)  
ph +39 031 525 391- fax +39 031 507 984  
info@instrumentation.it - www.instrumentation.it